

Analysis of selected Supervisorial races from the November 2006 election

David Latterman
Fall Line Analytics
dlatterman@flanalytics.com

Summary

In this report I examine the Supervisorial and Ranked Choice Voting (RCV) results from Districts 4 and 6, while touching upon District 10. Districts 4 and 6 had competitive races that required several RCV passes for a winner to be declared. D10, although there was a declared winner after one round, proved interesting due to the number of candidates, and from where Sophie Maxwell's votes originated. Districts 2 and 8 are not examined as they were not competitive races. Also, this paper takes a brief look at RCV itself.

District 4 was won by conservative Chinese activist Ed Jew in a conservative Asian district. The results were relatively close, with Ron Dudum coming in second. These two candidates distanced themselves from the rest of pack. Jew won with a strong second-choice showing from the Asian vote. District 6, won by Chris Daly, was a contentious race. While there had been much talk about a demographic shift in the district, and indeed this race was closer than in previous years, ultimately Daly prevailed with more core support in the District. Although this race went several RCV rounds, RCV did not play strongly into Daly's victory since in the first round he received 49% of the vote.

Background

This election marks the second time in which RCV was used for Supervisorial races. In 2004, the only relatively competitive race was in D7, in which Sean Elsbernd won. In 2006, there were two races seen as competitive, in D4 and D6. D6 ended up somewhat close, but not that close at the end of it. D4 was truly competitive, and can be the first race said to be decided by RCV voting patterns after a very tight first round.

This report examines the results of D10, D4, and D6 at different levels of analysis. Also, I try to paint an overall picture of RCV trends in San Francisco. I touch upon PVI, but this is not always a reliable metric for candidate races since voters use different criteria for how they vote on issues than on respective candidates for various offices. **Appendix 1** shows the PVI correlations with all the featured candidates and some commentary. Please note most of the maps in this report are to different scales.

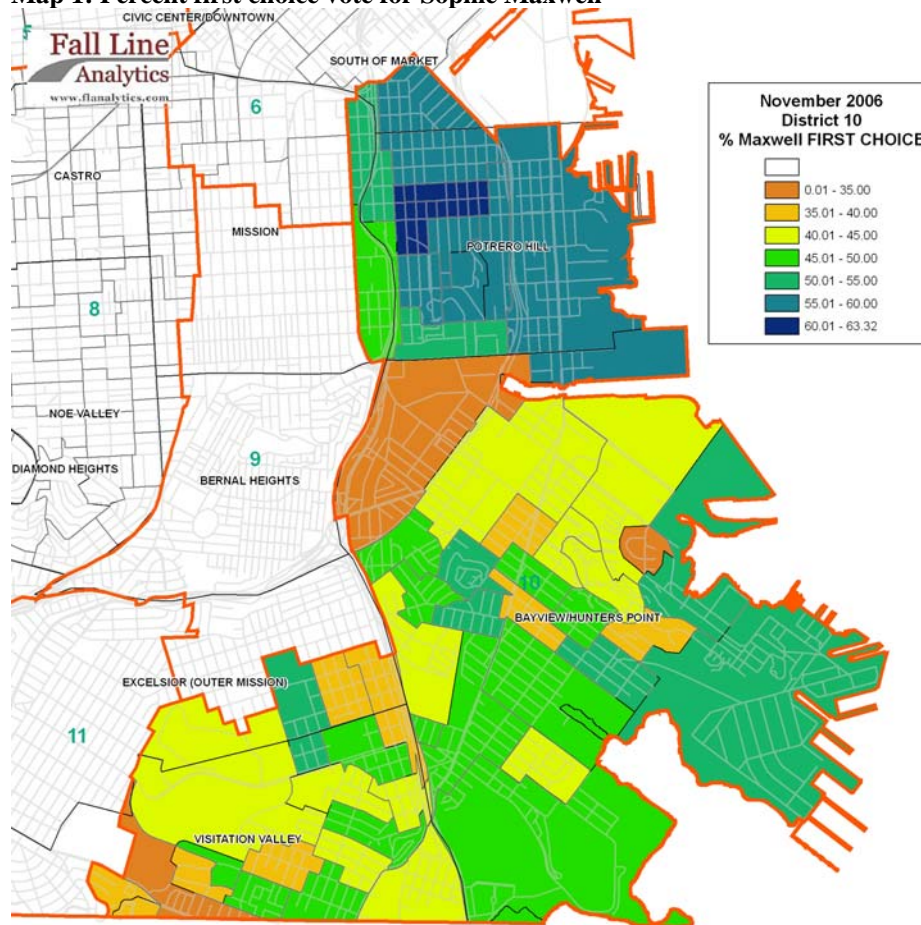
A note about RCV results: The Department of Elections (DOE) (at least in the preliminary data) doesn't distinguish the difference between bullet voting and someone simply not filling in their ballot all the way. So, 'Null' can mean there is no candidate for a second, or third choice vote, or, someone bullet voted. For instance, if we see 'Chris Daly, null, null' on a ballot, it can mean the person only filled in Daly as a first choice, or she bullet voted, voting for Chris Daly for each of the first through third choices. In either case, the voter didn't have a separate second choice.

D10

Although Sophie Maxwell won re-election in the first round with around 56% of the vote, against 6 candidates, a map of the first-choice vote for Maxwell proves interesting (Map 1). Although Maxwell is African-American, and Bayview/Hunters Point (BVHP) is the dominant African-American community in San Francisco, Maxwell did best in Potrero Hill and Dogpatch. The highest precincts for Maxwell, where she received over 60% of the first choice votes, were right at the top of the hill. The main reason for this is that there were several other African-American candidates who split the black vote. Still, Maxwell received 50% and higher in most of BVHP, so this shouldn't be overstated.

I don't analyze the RCV ballots for D10, since Maxwell won in the first round, but it is noteworthy Maxwell was able to receive so many votes from diverse groups throughout the district. However, those who claim Maxwell's power base is in Potrero Hill, and not necessarily BVHP, may be correct. Maxwell has allied herself, for the most part, with the other progressive Supervisors on the Board. Potrero Hill has the highest PVI scores in D10, averaging in the 70's (BVHP is in the 60's). This trend, however, doesn't show up strongly in the PVI charts in the Appendix.

Map 1: Percent first choice vote for Sophie Maxwell



D4

District 4 is the first race to be decided by an RCV showdown. This race had six candidates, four of whom were considered ‘frontrunners’. Ed Jew and Ron Dudum are neighborhood activists, both having run before. Jaynry Mak was a legislative aide to Fiona Ma, well known in the Sunset. Doug Chan was a former Police Commissioner and the Mayor’s pick. Jew was considered the most conservative candidate, with Dudum close behind. Chan was a moderate and Mak ran as the progressive candidate, with the endorsements of the SFBG and the Tenant’s Union.¹

Although early polling had Jew and Dudum ahead based on name recognition, most pundits, myself included, thought this would be a race between Chan and Mak, since they were already on ‘the inside’. Later in the campaign, it was clear Dudum was running a strong neighborhood operation, with sustained support. Few people gave Jew a chance, though he was also running a strong neighborhood campaign.

Ed Jew took the most number of first place votes with 26.25% of the vote. Dudum was a close second with 26.0%. Mak was third with 23.0%, and Chan received 16.3% of the first place vote. By the time these results came out, many thought that Jew would receive more second-choice votes due to Asian identity voting. See Maps 2-5 for the first-choice vote distribution of the four front-runners.

After four RCV runs, that’s how it played out. Table 1 shows the RCV distribution of the respective passes, as a percentage of how many votes from the dropped candidates goes to whom. As we saw in D1 in 2004, and the Assessor-Reorder race in 2005, we see a relatively strong Asian identity vote. Mak and Dudum received most of Ferguson’s vote (Ferguson is white), but Jew received the plurality of Chan’s votes, while Jew received more of the remaining eligible votes from Mak. Keep in mind Chan received second choice votes as well from Mak (and Dudum and Jew for that matter).

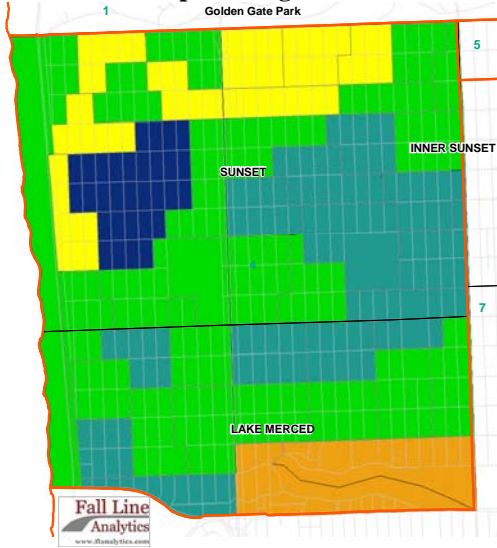
Table 1: Distribution of second-choice votes as candidates are removed due to RCV. Pass 1 is considered the original vote.

	Zheng/Ferg OUT	Chan OUT	Mak OUT
	After Pass 2	After Pass 3	After Pass 4
	% Distribution	% Distribution	% Distribution
ED JEW	20%	38%	60%
RON DUDUM	31%	30%	40%
JAYNRY MAK	35%	32%	
DOUG CHAN	14%		
HOUSTON ZHENG			
DAVID FERGUSON			
Exhausted ballots: (initial: 1953)	2355	3106	5633

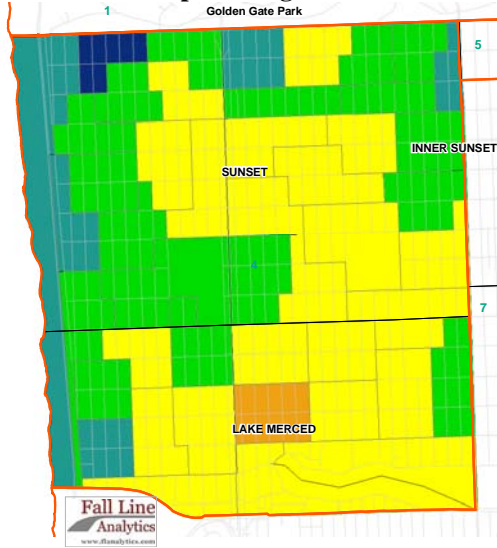
¹ Keep in mind whether these people actually *are* liberal or conservative is less relevant than how they ran, or what the perception of them was to the voters. I make no claims as to knowing what their true political beliefs are. In politics as in many things, perception is reality.

Table 2 shows crosstabs of the second and third choice votes, given who the first choice was, respectively. If you look at “percent within choice 1”, you can see the strength of the Asian vote. Dudum did much more poorly than Jew, Mak, or even Chan as the second choice to any Asian candidate. Interestingly, Chan received many of Jew’s second choice votes. There also seemed to be synergy between Mak and fifth-place finisher David Ferguson. Notice that the highest percentage of second choice ‘null’ votes came from people who voted for Dudum. Could this be an anti-Asian vote? Going through these tables, there are many interesting combinations with the candidates as well as the ‘null’ vote, and I’ll leave it to the reader to draw some of his or her own conclusions.

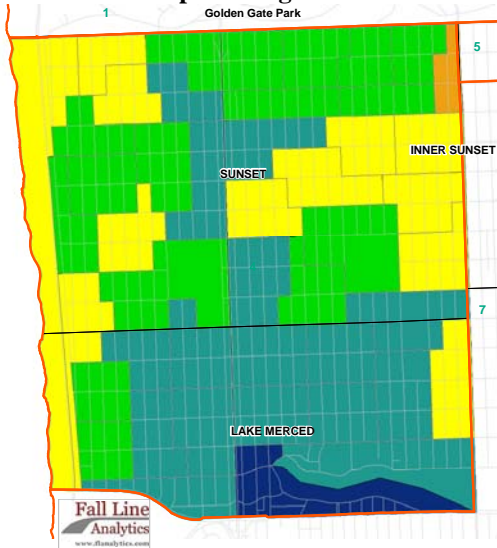
Map 2: First choice percentage for Jew



Map 4: First choice percentage for Mak



Map 3: First choice percentage for Dudum



Map 5: First choice percentage for Chan

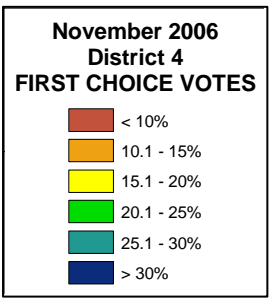
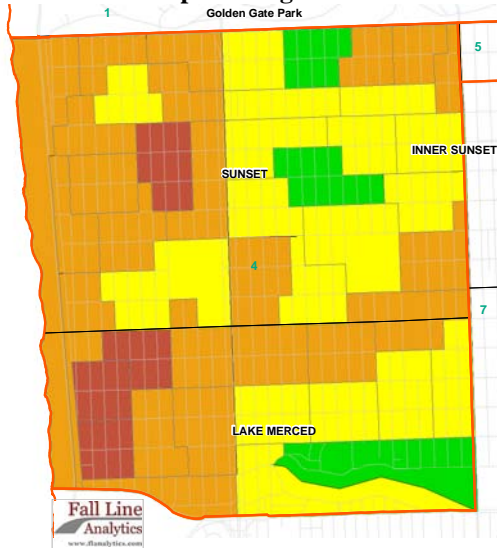


Table 2: Crosstabs of the second and third choice of each first-place finisher for D4.

Choice 2 * Choice 1 Crosstabulation			Choice 1							Total
			DAVID FERGUSON	DOUG CHAN	ED JEW	HOUSTON ZHENG	JAYNRY MAK	NULL	RON DUDUM	
Choice_2	DAVID FERGUSON	Count	0.0	157.0	228.0	35.0	843.0	32.0	867.0	2162.0
		% within Choice 2	0.0	7.3	10.5	1.6	39.0	1.5	40.1	100.0
		% within Choice 1	0.0	4.9	4.5	15.7	18.9	1.4	17.2	10.0
	DOUG CHAN	Count	107.0	0.0	1574.0	47.0	767.0	34.0	911.0	3440.0
		% within Choice 2	3.1	0.0	45.8	1.4	22.3	1.0	26.5	100.0
		% within Choice 1	7.6	0.0	30.8	21.1	17.2	1.5	18.1	15.9
	ED JEW	Count	172.0	878.0	0.0	60.0	1027.0	50.0	931.0	3118.0
		% within Choice 2	5.5	28.2	0.0	1.9	32.9	1.6	29.9	100.0
		% within Choice 1	12.3	27.6	0.0	26.9	23.0	2.2	18.5	14.4
	HOUSTON ZHENG	Count	46.0	112.0	206.0	0.0	105.0	8.0	90.0	567.0
		% within Choice 2	8.1	19.8	36.3	0.0	18.5	1.4	15.9	100.0
		% within Choice 1	3.3	3.5	4.0	0.0	2.4	0.3	1.8	2.6
	JAYNRY MAK	Count	370.0	724.0	1523.0	37.0	0.0	59.0	626.0	3339.0
		% within Choice 2	11.1	21.7	45.6	1.1	0.0	1.8	18.7	100.0
		% within Choice 1	26.4	22.8	29.8	16.6	0.0	2.6	12.4	15.4
NULL	Count	373.0	635.0	1051.0	27.0	1084.0	2060.0	1612.0	6842.0	
	% within Choice 2	5.5	9.3	15.4	0.4	15.8	30.1	23.6	100.0	
	% within Choice 1	26.6	20.0	20.6	12.1	24.3	89.8	32.0	31.5	
RON DUDUM	Count	335.0	670.0	522.0	17.0	634.0	52.0	0.0	2230.0	
	% within Choice 2	15.0	30.0	23.4	0.8	28.4	2.3	0.0	100.0	
	% within Choice 1	23.9	21.1	10.2	7.6	14.2	2.3	0.0	10.3	
Total	Count	1403.0	3176.0	5104.0	223.0	4460.0	2295.0	5037.0	21698.0	
	% within Choice 2	6.5	14.6	23.5	1.0	20.6	10.6	23.2	100.0	
	% within Choice 1	100.0	100.0	100.0	100.0	100.0	100.0	100.0	100.0	
Choice 3 * Choice 1 Crosstabulation			Choice 1							Total
			DAVID FERGUSON	DOUG CHAN	ED JEW	HOUSTON ZHENG	JAYNRY MAK	NULL	RON DUDUM	
Choice_3	DAVID FERGUSON	Count	0.0	277.0	317.0	29.0	416.0	13.0	696.0	1748.0
		% within Choice 3	0.0	15.8	18.1	1.7	23.8	0.7	39.8	100.0
		% within Choice 1	0.0	8.7	6.2	13.0	9.3	0.6	13.8	8.1
	DOUG CHAN	Count	134.0	0.0	1393.0	48.0	841.0	27.0	624.0	3067.0
		% within Choice 3	4.4	0.0	45.4	1.6	27.4	0.9	20.3	100.0
		% within Choice 1	9.6	0.0	27.3	21.5	18.9	1.2	12.4	14.1
	ED JEW	Count	240.0	671.0	0.0	42.0	605.0	16.0	656.0	2230.0
		% within Choice 3	10.8	30.1	0.0	1.9	27.1	0.7	29.4	100.0
		% within Choice 1	17.1	21.1	0.0	18.8	13.6	0.7	13.0	10.3
	HOUSTON ZHENG	Count	102.0	219.0	716.0	0.0	325.0	7.0	214.0	1583.0
		% within Choice 3	6.4	13.8	45.2	0.0	20.5	0.4	13.5	100.0
		% within Choice 1	7.3	6.9	14.0	0.0	7.3	0.3	4.2	7.3
	JAYNRY MAK	Count	199.0	605.0	955.0	29.0	0.0	17.0	596.0	2401.0
		% within Choice 3	8.3	25.2	39.8	1.2	0.0	0.7	24.8	100.0
		% within Choice 1	14.2	19.0	18.7	13.0	0.0	0.7	11.8	11.1
NULL	Count	527.0	926.0	1319.0	46.0	1804.0	2197.0	2251.0	9070.0	
	% within Choice 3	5.8	10.2	14.5	0.5	19.9	24.2	24.8	100.0	
	% within Choice 1	37.6	29.2	25.8	20.6	40.4	95.7	44.7	41.8	
RON DUDUM	Count	201.0	478.0	404.0	29.0	469.0	18.0	0.0	1599.0	
	% within Choice 3	12.6	29.9	25.3	1.8	29.3	1.1	0.0	100.0	
	% within Choice 1	14.3	15.1	7.9	13.0	10.5	0.8	0.0	7.4	
Total	Count	1403.0	3176.0	5104.0	223.0	4460.0	2295.0	5037.0	21698.0	
	% within Choice 3	6.5	14.6	23.5	1.0	20.6	10.6	23.2	100.0	
	% within Choice 1	100.0	100.0	100.0	100.0	100.0	100.0	100.0	100.0	

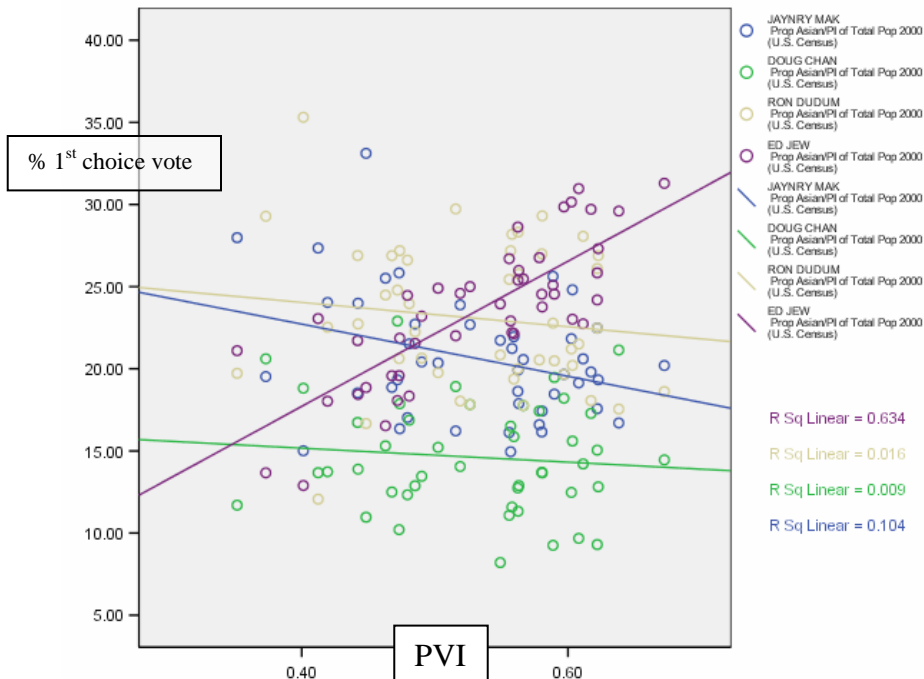
In hindsight, the results made perfect sense, as Jew was a well-known conservative Asian activist in the most Asian and one of the most conservative districts (behind D2 and D7). The two strongest neighborhood candidates placed the highest, and Jew had high name recognition from his business and advertisements, plus his activism on the neighborhood school issue. Chan never gained the momentum one would have thought with the “establishment” behind him, which indicates that in some parts of the city, the endorsement of the Mayor means little. Mak may have fared better had there not been some negative press early in her campaign, but my guess, looking at the results, is that she likely may have overtaken Dudum, but not Jew. This is further evidenced by Table 3, which shows the total number of voters’ ballots the candidates were on.

Table 3: Number of ballots D4 on which candidates appeared (n = 21698)

Candidate	Ballots
Jew	10452
Dudum	8866
Mak	10200
Chan	9683

Finally, just to look at the actual Asian vote by looking at precinct percentage of Asian population, the only clear positive correlation was with Ed Jew. The strongest inverse correlation was with Mak, showing her stronger result in the racially-mixed Outermost Sunset. Correlations were weak for both Chan and Dudum.

Figure 1: Percentage Asian population per precinct vs. first choice vote percentage



D6

Without a doubt, this was the biggest must-see race since the 2003 Mayoral. Few people are neutral about Chris Daly, the D6 incumbent. The progressives strongly support him and most moderates desperately wanted him gone. In 2002, when Daly ran for re-election after his first two-year term, many moderates challenged Daly in what was termed ‘ABCD’, or Anybody But Chris Daly. The thinking was that if someone could get him into a runoff, they’d have a shot. Unfortunately for the challengers, they all split the moderate vote and Daly was able to receive over 50% in the November election; there was no runoff.

RCV introduced a new dynamic into the 2006 race (with 8 candidates), but the moderate thinking became, if they could find just one candidate and support him or her, the race would essentially become a one-on-one, which is what the moderates have wanted since 2002. In 2006, they got their wish. Rob Black, a legislative aide to Michela Alioto-Pier and Treasure Island resident, took on Chris Daly.

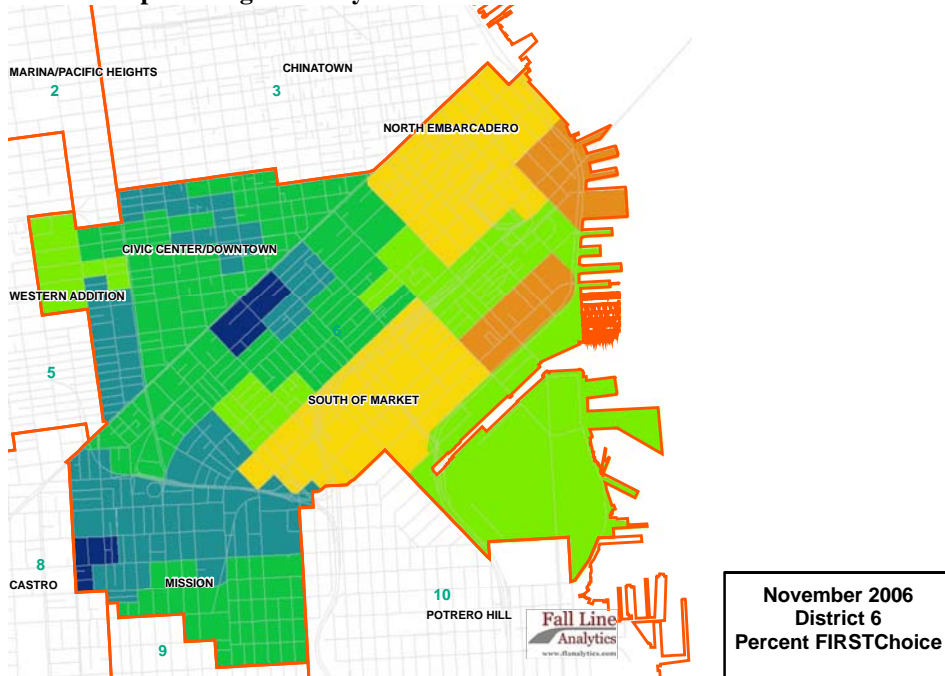
It's pretty well understood by now that D6 is changing demographically, due to all the condo developments down in Mission Bay and Eastern SOMA. There was also little question that most of the new voters would be more politically moderate than the traditional D6 voter from the Inner Mission or Tenderloin. The main question in this race became, had it changed enough to alter election results?

The race itself was contentious and at times nasty. Polling initially had Daly winning easily, but by a month out the polls switched over to Black. This caused redoubled efforts on behalf of Daly, and gave the Black campaign momentum. But in the end, Daly won with 48.8% of the first choice vote, with Black receiving 39.8%. The third choice finisher received 3.8% only. In effect, this did become the one-on-one the challengers wanted.

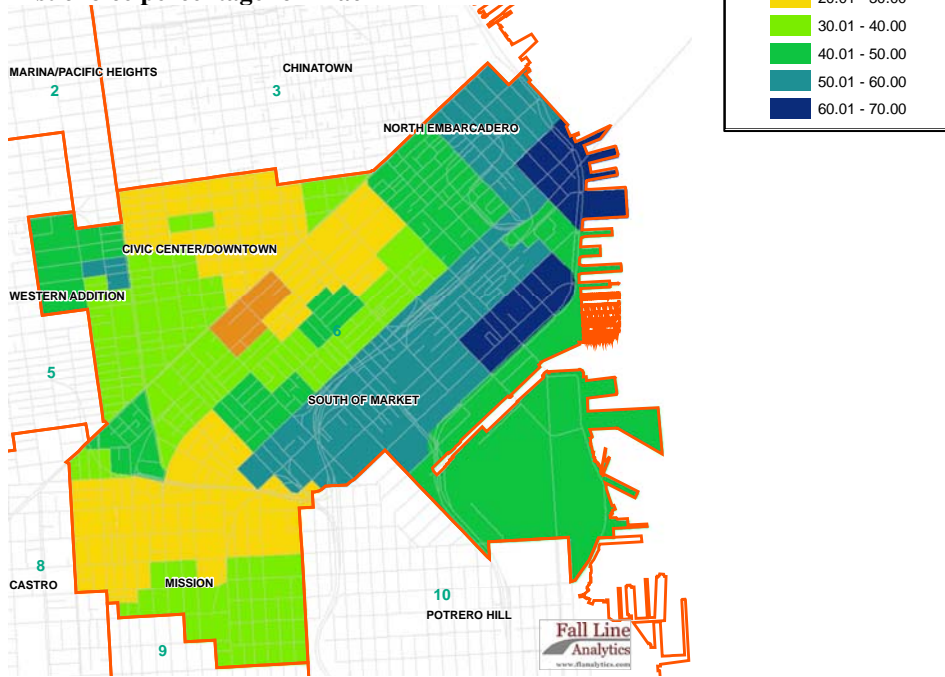
Maps 6 and 7 show the first choice percentage for Daly and Black. There are no surprises here; Daly did well in Western SOMA, the Tenderloin, and throughout the Inner Mission. Black did well in Mission bay, Eastern SOMA, and the North Embarcadero² area. Both candidates made inroads into the other's base, as Daly didn't do too badly in Mission Bay, and Black did okay in the Civic Center area.

² Is anyone calling this Barbary Coast, yet?

Map 6: First choice percentage for Daly

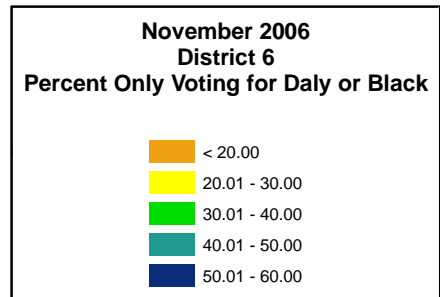
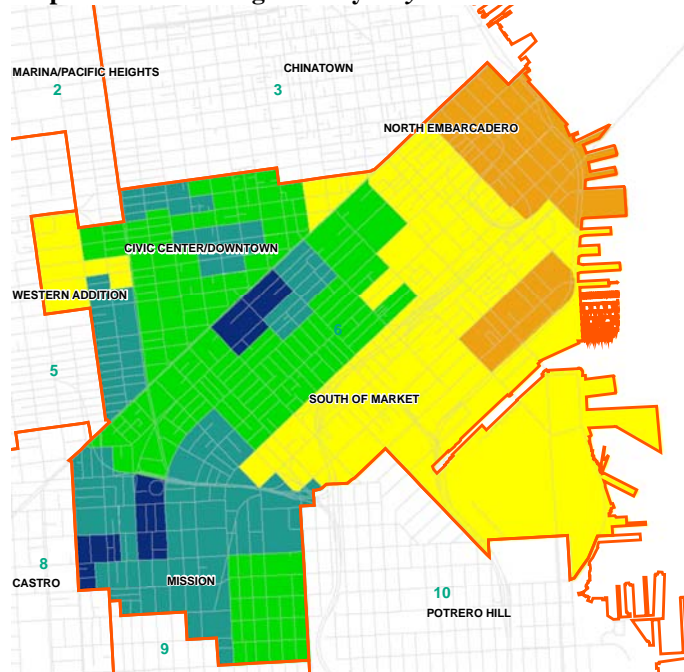


Map 7: First choice percentage for Black



Maps 7 and 8 show the percentages of precincts in which voters voted *only* for Daly or Black. Plenty of voters had both men on their ballots, but these maps show voters strong preferences for only one of the main two candidates. There isn't much difference with the first choice maps, but these seem to expand on the traditional bases, a bit.

Map 8: Percent voting for Daly *only*



Map 9: Percent voting for Black *only*

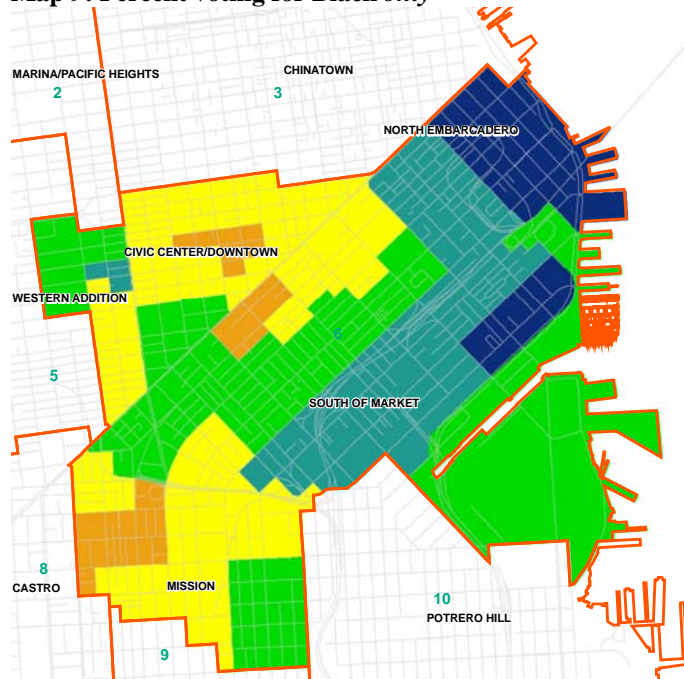


Table 3 shows the RCV crosstabs for the second and third choices, given the first choice votes. Note 17% of Black voters put Daly second, and 20% of Daly voters put Black second. Not everyone was so caught up in the ideological war down in D6. These voters likely just preferred one over the other without as much contention. But then again, 51% of voters who had Daly first either bullet voted or didn't make a second choice vote, while 40% of Black voters did the same.

Table 4: Crosstabs of the second and third choice of each first-place finisher for D4.

Choice 2 * Choice 1 Crosstabulation			Choice 1									Total
			CHRIS DALY	DAVY JONES	GEORGE DIAS	MANUEL JIMENEZ	MATT DRAKE	NULL	ROB BLACK	ROBERT JORDAN	VILIAM DUGOVIC	
Choice 2	CHRIS DALY	Count	0.0	69.0	35.0	57.0	86.0	56.0	1127.0	14.0	57.0	1501.0
		% within Choice 2	0.0	4.6	2.3	3.8	5.7	3.7	75.1	0.9	3.8	100.0
		% within Choice 1	0.0	19.3	16.4	19.1	13.4	3.0	16.5	12.0	17.7	7.9
	DAVY JONES	Count	669.0	0.0	15.0	25.0	41.0	14.0	372.0	13.0	35.0	1184.0
		% within Choice 2	56.5	0.0	1.3	2.1	3.5	1.2	31.4	1.1	3.0	100.0
		% within Choice 1	8.1	0.0	7.0	8.4	6.4	0.7	5.4	11.1	10.9	6.2
	GEORGE DIAS	Count	209.0	23.0	0.0	60.0	56.0	4.0	240.0	1.0	30.0	623.0
		% within Choice 2	33.5	3.7	0.0	9.6	9.0	0.6	38.5	0.2	4.8	100.0
		% within Choice 1	2.5	6.4	0.0	20.1	8.7	0.2	3.5	0.9	9.3	3.3
	MANUEL JIMENEZ	Count	424.0	36.0	43.0	0.0	46.0	4.0	558.0	11.0	18.0	1140.0
		% within Choice 2	37.2	3.2	3.8	0.0	4.0	0.4	48.9	1.0	1.6	100.0
		% within Choice 1	5.1	10.1	20.1	0.0	7.2	0.2	8.2	9.4	5.6	6.0
	MATT DRAKE	Count	375.0	38.0	34.0	20.0	0.0	8.0	1441.0	8.0	77.0	2001.0
		% within Choice 2	18.7	1.9	1.7	1.0	0.0	0.4	72.0	0.4	3.8	100.0
		% within Choice 1	4.5	10.6	15.9	6.7	0.0	0.4	21.1	6.8	23.9	10.6
	NULL	Count	4242.0	85.0	30.0	67.0	142.0	1742.0	2724.0	45.0	58.0	9135.0
		% within Choice 2	46.4	0.9	0.3	0.7	1.6	19.1	29.8	0.5	0.6	100.0
		% within Choice 1	51.2	23.8	14.0	22.5	22.1	92.5	39.9	36.5	18.0	48.2
	ROB BLACK	Count	1616.0	61.0	33.0	56.0	200.0	44.0	0.0	18.0	35.0	2063.0
		% within Choice 2	78.3	3.0	1.6	2.7	9.7	2.1	0.0	0.9	1.7	100.0
		% within Choice 1	19.5	17.1	15.4	18.8	31.1	2.3	0.0	15.4	10.9	10.9
ROBERT JORDAN	Count	155.0	10.0	14.0	8.0	25.0	6.0	112.0	0.0	12.0	342.0	
	% within Choice 2	45.3	2.9	4.1	2.3	7.3	1.8	32.7	0.0	3.5	100.0	
	% within Choice 1	1.9	2.8	6.5	2.7	3.9	0.3	1.6	0.0	3.7	1.8	
VILIAM DUGOVIC	Count	601.0	35.0	10.0	5.0	47.0	6.0	254.0	7.0	0.0	965.0	
	% within Choice 2	62.3	3.6	1.0	0.5	4.9	0.6	26.3	0.7	0.0	100.0	
	% within Choice 1	7.2	9.8	4.7	1.7	7.3	0.3	3.7	6.0	0.0	5.1	
Total	Count	8291.0	357.0	214.0	298.0	643.0	1884.0	6828.0	117.0	322.0	18954.0	
	% within Choice 2	43.7	1.9	1.1	1.6	3.4	9.9	36.0	0.6	1.7	100.0	
	% within Choice 1	100.0	100.0	100.0	100.0	100.0	100.0	100.0	100.0	100.0	100.0	
Choice 3 * Choice 1 Crosstabulation			Choice 1									Total
			CHRIS DALY	DAVY JONES	GEORGE DIAS	MANUEL JIMENEZ	MATT DRAKE	NULL	ROB BLACK	ROBERT JORDAN	VILIAM DUGOVIC	
Choice 3	CHRIS DALY	Count	0.0	35.0	21.0	35.0	68.0	32.0	417.0	19.0	44.0	671.0
		% within Choice 3	0.0	5.2	3.1	5.2	10.1	4.8	62.1	2.8	6.6	100.0
		% within Choice 1	0.0	9.8	9.8	11.7	10.6	1.7	6.1	16.2	13.7	3.5
	DAVY JONES	Count	778.0	0.0	26.0	35.0	50.0	6.0	531.0	7.0	35.0	1488.0
		% within Choice 3	53.0	0.0	1.8	2.4	3.4	0.4	36.2	0.5	2.4	100.0
		% within Choice 1	9.4	0.0	12.1	11.7	7.8	0.3	7.8	6.0	10.9	7.7
	GEORGE DIAS	Count	321.0	19.0	0.0	37.0	54.0	7.0	519.0	4.0	20.0	981.0
		% within Choice 3	32.7	1.9	0.0	3.8	5.5	0.7	52.9	0.4	2.0	100.0
		% within Choice 1	3.9	5.3	0.0	12.4	8.4	0.4	7.6	3.4	6.2	5.2
	MANUEL JIMENEZ	Count	509.0	35.0	34.0	0.0	58.0	6.0	626.0	5.0	21.0	1294.0
		% within Choice 3	39.3	2.7	2.6	0.0	4.5	0.5	48.4	0.4	1.6	100.0
		% within Choice 1	6.1	9.8	15.9	0.0	9.0	0.3	9.2	4.3	6.5	6.8
	MATT DRAKE	Count	526.0	45.0	24.0	28.0	0.0	4.0	618.0	10.0	44.0	1299.0
		% within Choice 3	40.5	3.5	1.8	2.2	0.0	0.3	47.6	0.8	3.4	100.0
		% within Choice 1	6.3	12.6	11.2	9.4	0.0	0.2	9.1	8.5	13.7	6.9
	NULL	Count	4927.0	110.0	50.0	95.0	232.0	1802.0	3530.0	52.0	90.0	10888.0
		% within Choice 3	45.3	1.0	0.5	0.9	2.1	16.6	32.4	0.5	0.8	100.0
		% within Choice 1	59.4	30.8	23.4	31.9	36.1	95.6	51.7	44.4	28.0	57.4
	ROB BLACK	Count	527.0	54.0	34.0	38.0	91.0	21.0	0.0	14.0	40.0	819.0
		% within Choice 3	64.3	6.6	4.2	4.6	11.1	2.6	0.0	1.7	4.9	100.0
		% within Choice 1	6.4	15.1	15.9	12.8	14.2	1.1	0.0	12.0	12.4	4.3
ROBERT JORDAN	Count	232.0	29.0	8.0	12.0	45.0	1.0	218.0	0.0	28.0	573.0	
	% within Choice 3	40.5	5.1	1.4	2.1	7.9	0.2	38.0	0.0	4.9	100.0	
	% within Choice 1	2.8	8.1	3.7	4.0	7.0	0.1	3.2	0.0	8.7	3.0	
VILIAM DUGOVIC	Count	471.0	30.0	17.0	18.0	45.0	5.0	369.0	6.0	0.0	961.0	
	% within Choice 3	49.0	3.1	1.8	1.9	4.7	0.5	38.4	0.6	0.0	100.0	
	% within Choice 1	5.7	8.4	7.9	6.0	7.0	0.3	5.4	5.1	0.0	5.1	
Total	Count	8291.0	357.0	214.0	298.0	643.0	1884.0	6828.0	117.0	322.0	18954.0	
	% within Choice 3	43.7	1.9	1.1	1.6	3.4	9.9	36.0	0.6	1.7	100.0	
	% within Choice 1	100.0	100.0	100.0	100.0	100.0	100.0	100.0	100.0	100.0	100.0	

In the end, Daly supporters simply outnumbered Black supporters. Although the demographic changes are obviously real, the shift hadn't been enough to change the outcome of the race. Black, I feel, fared well given the demographic realities of D6 and his low-name recognition to start. To borrow a phrase from SFist, not everyone hated Chris.

A look at RCV itself

Only D4 and D10 really presented themselves as races with legitimate multiple options, and even in D10 Maxwell had most of the endorsements and was clearly the frontrunner from the beginning. D6 had multiple candidates, but the voters themselves saw fit to make a choice between two primary candidates. D8 had only two credible candidates (but with a strong incumbent), and D2 was a blowout from the beginning.

A lot has been made of RCV fairness and equity, both in perhaps giving an advantage to the incumbent, and whether or not different groups of people use RCV properly. I don't feel like there's enough data yet to conclusively answer either aspect, but we can look at some trends.

It should be noted that when RCV was run for the first time in the 2006 race, Dudum was ahead in the vote count by a little, and still lost. It's clear Dudum could have been ahead of Jew – or Mak – considerably in the first choice vote, but yet still would have lost given how much more strongly they did in the second choice vote. In a sense, for the first time, RCV simulated a true runoff where Jew defeated Dudum given the Asian support he had throughout the Sunset, similar to how Fiona Ma defeated Dudum in 2002.

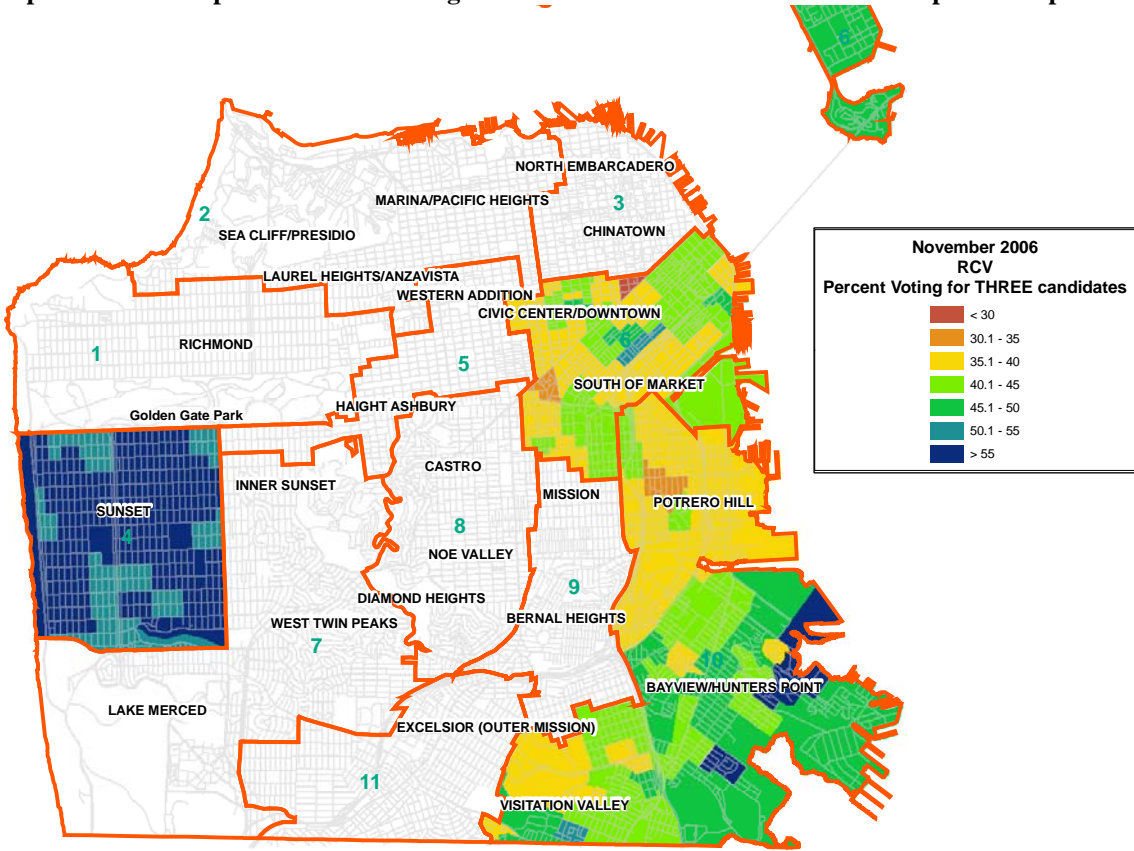
In all likelihood Daly would have defeated Black in a runoff as well, since even though the RCV runs went to five total passes, Daly already had 49% of the vote. It's possible that there could have been a scenario like in 2002 where Dufty overcame first-place finisher Eileen Hansen in the runoff, but Dufty was still introducing himself in District 8. For all intents and purposes, the main vote here was a simulated runoff with only two main candidates. Daly would likely have won a runoff (with lower turnout but a fired up activist volunteer base) by around 55-45. But, we'll never know.

Understanding equity, and whether or not RCV is a fair system to all San Franciscans, is difficult without some advanced survey research. Exit polling is useful, as is talking to people in-depth about how they perceive RCV. However, we can look at some larger order trends with the limited data we have, understanding these are just some big-picture items to think about.

Map 10 shows the percentage of precincts in D4, D6, and D10 that voted for three candidates. The number is high in D4, and lower in D6. To be honest, this map may say more about the races themselves than about RCV. D4 had several competitive candidates, while D6 had two. Interestingly, BVHP chose frequently among three candidates, as this African-American part of San Francisco chose among several African-American candidates. The percentage was much lower in Potrero Hill, which gave its support to Maxwell.

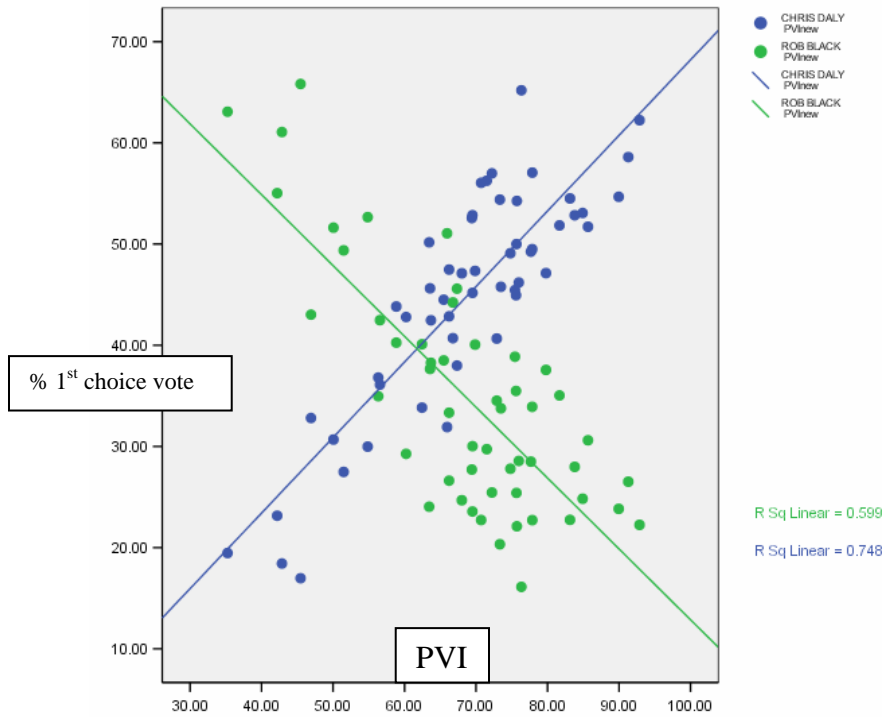
After the 2007 Mayoral race, provided that there are several candidates, we should get our first citywide look at RCV in a major race with multiple candidates, 2005's Assessor-Recorder race notwithstanding. We'll then be able to compare all voters to look at RCV trends in the bigger picture.

Map 10: Percent of precinct voters voting for three different candidates in their respective Supervisorial race



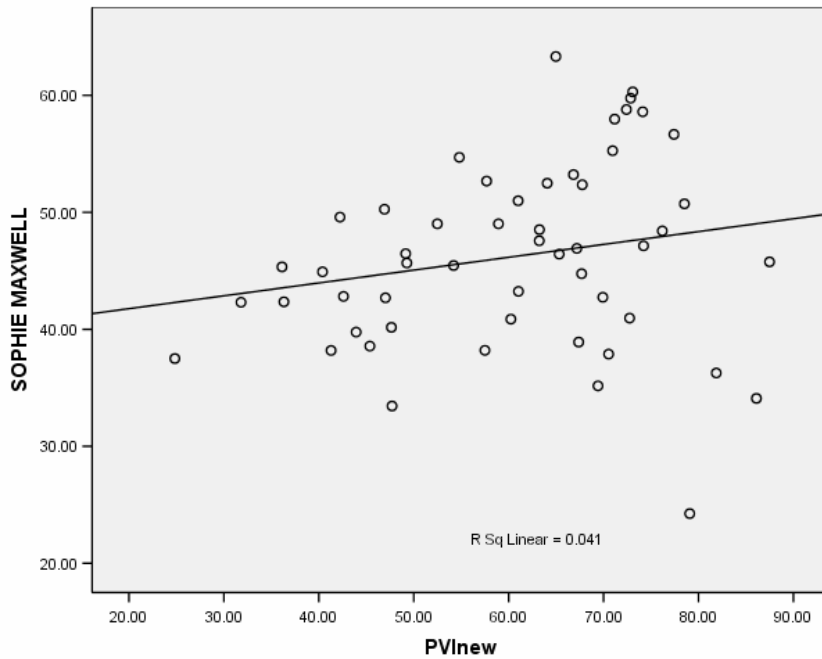
Appendix 1: PVI correlations by candidate, by district

Figure 2: D6 PVI vs. candidate correlation



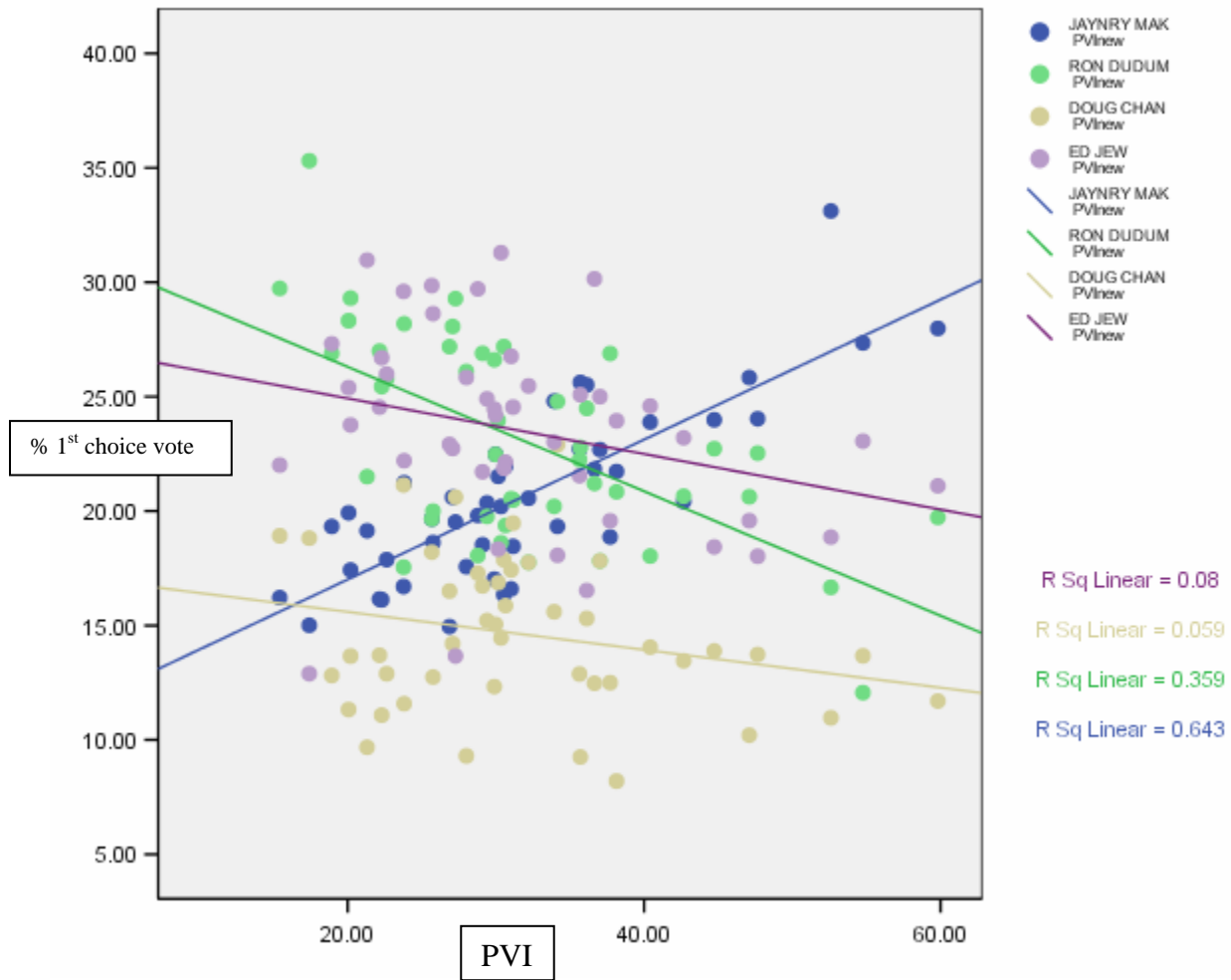
Note Daly actually gains a stronger ideological vote than Black, with an R^2 about 0.15 higher.

Figure 3: D10 PVI vs. candidate correlation



No strong correlation here.

Figure 4: D4 PVI vs. candidate correlation



The strongest correlation here is a positive one with Mak (blue), while the other three candidates – more conservative – correlate inversely. Of these three candidates, the only somewhat strong correlation is with Dudum (green).